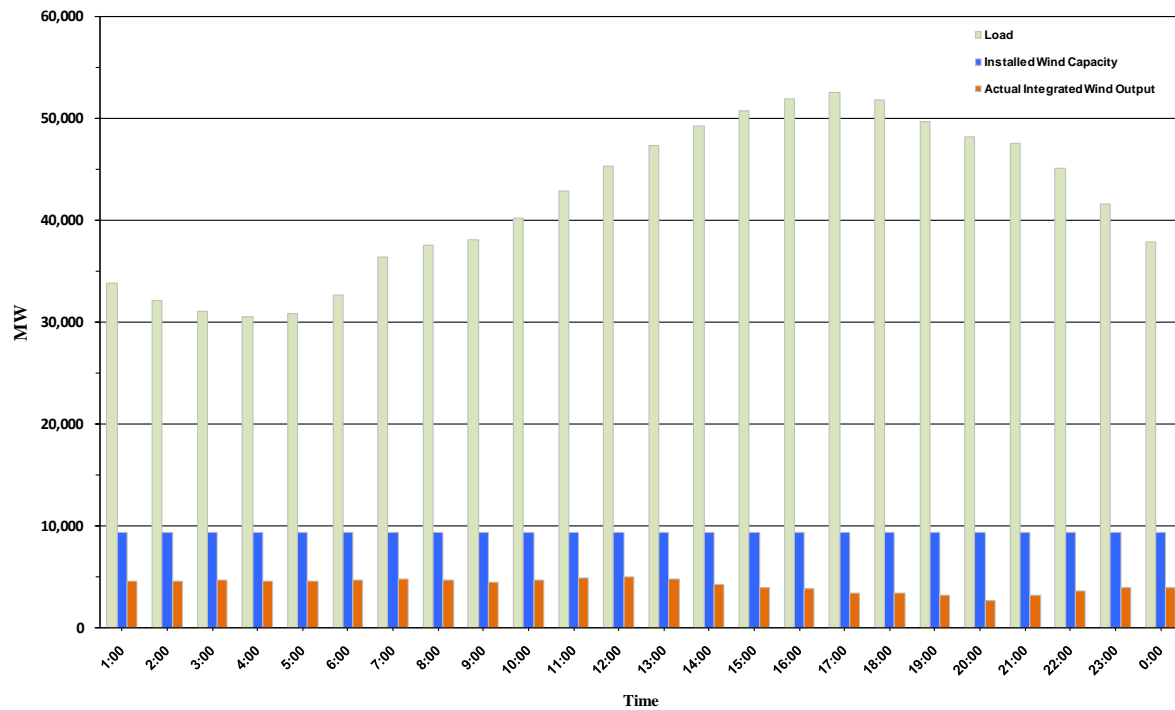




ERCOT Grid Operations Wind Penetration Report: 09/23/10

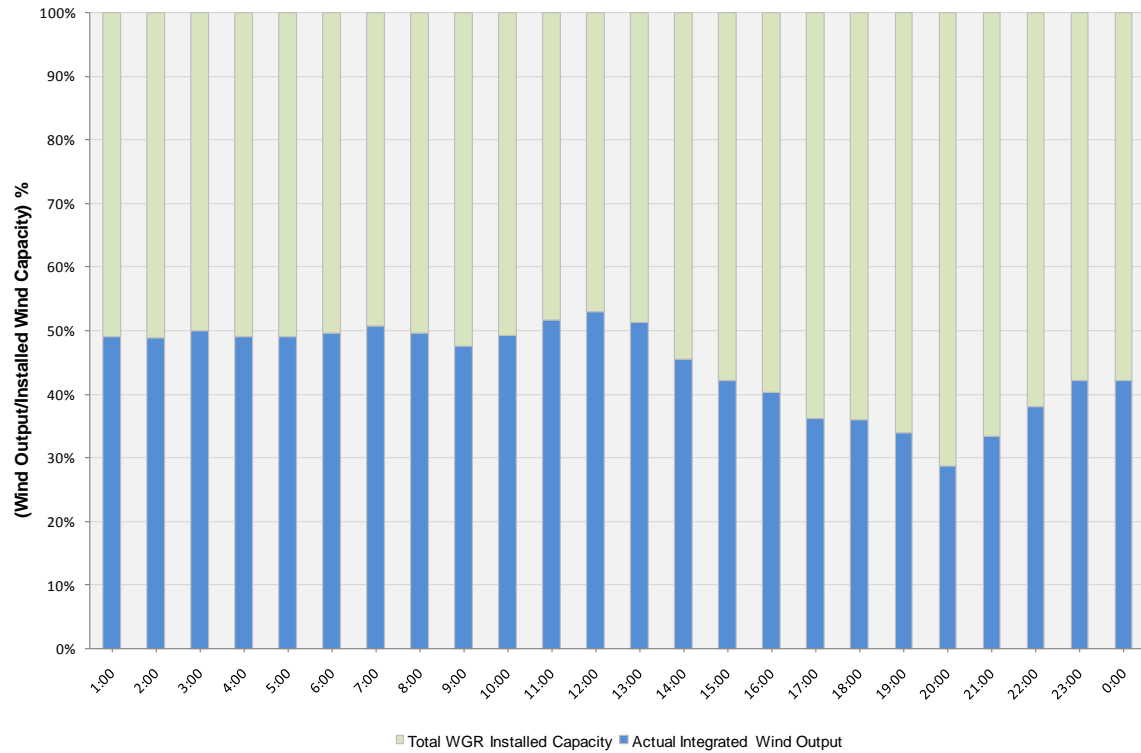
Peak Load	52,548 MW
Load Peak Hour	17
Wind Record 06/12/10	7016 MW
Max Wind value	5208 MW
Wind Peak Hour	11:32:32
Wind Penetration %	11.43

Hourly Average Actual Load vs. Actual Wind Output
09-23-2010

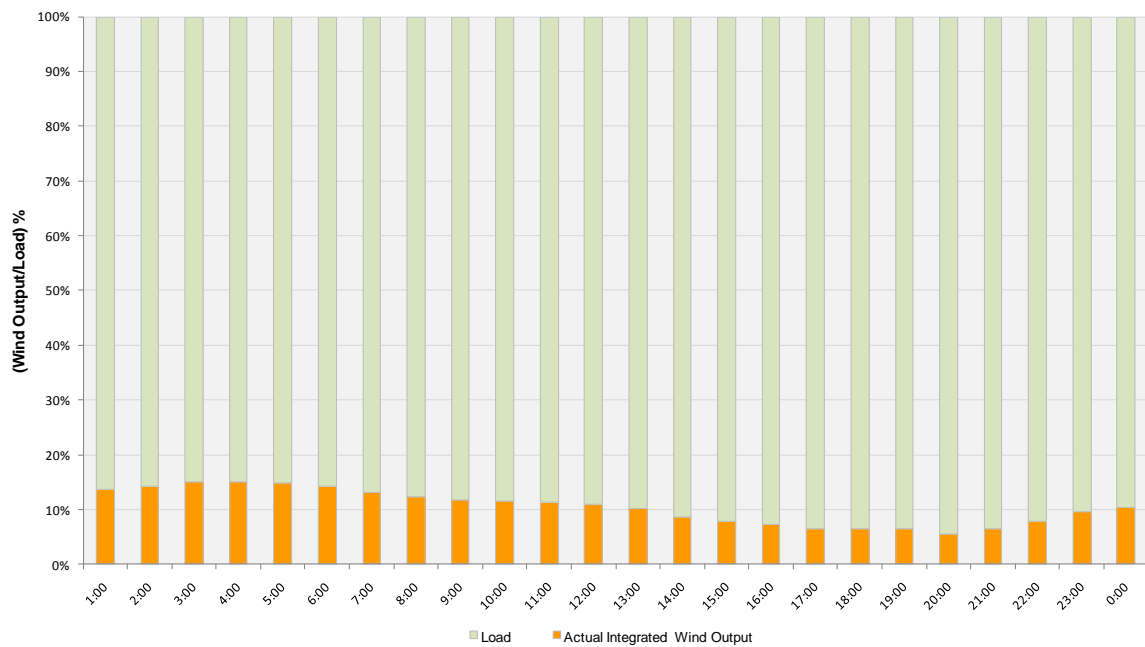




Actual Wind Output as a Percentage of the Total Installed Wind Capacity
09-23-2010



Actual Wind Output as a Percentage of the ERCOT Load
09-23-2010





ERCOT Load vs. Actual Wind Output 09/16/10 - 09/23/10

